

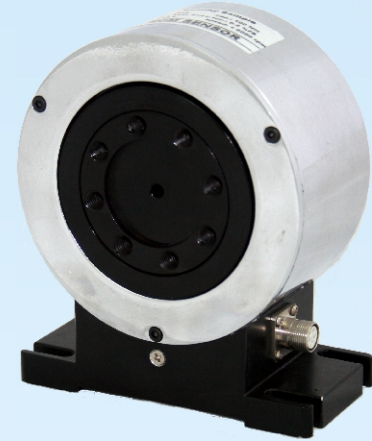
Model 1816

Rotational Torque Transducers with air bearing



Description:

BCM 1816 rotational torque transducers are designed to have an air bearing contact, which allows these products to be able to function under high rotating speed up to 6000 rpm. The non-contact nature of the signal transfer reduces the need for maintenance. Hence, 1816 rotational torque transducers are ideal for long-term durability applications.



Features:

air bearing

5, ..., 2000 N.M capacity

maximum speed of 6000 rpm

0.5%fso measuring accuracy

Specifications:

rated load capacity	N.M	5, 10, 20, 50, 100, 200, 500, 1000, 2000
safe overload	%FS	120
ultimate overload	%FS	150
maximum speed	rpm	6000
power supply	V	15
rated output sensitivity		10 ± 5 kHz , 0 ~ 12 V
combined error	%FSO	0.5
non-linearity	%FSO	± 0.5
hysteresis	%FSO	± 0.5
repeatability	%FSO	± 0.5
load current	mA	< 10
insulation resistance	MΩ	≥5000@50 VDC
temperature coefficient of span	%FSO/10°C	± 0.2
temperature coefficient of zero	%FSO/10°C	± 0.2
compensated temperature range	°C	0 ~ +40
operating temperature range	°C	-30 ~ +80
storage temperature range	°C	-40 ~ +80
material of torque body		alloy steel

The listed specifications are subject to change without prior notice.

Ordering Code: model - capacity - output - accuracy - other requests

example: 1816 - 50Nm - 10kHz,0/12V - 0.5%fso - mating connector + 3m cable



BCM SENSOR TECHNOLOGIES BVBA

ISO9001 Certified Company