

Model 6991

S-Type Force Transducers with Overload-Protection



Description

Model 6991 is designed as an S-type force transducer with overload protection, to measure tension or compression forces. It is widely used for material test and for process control.

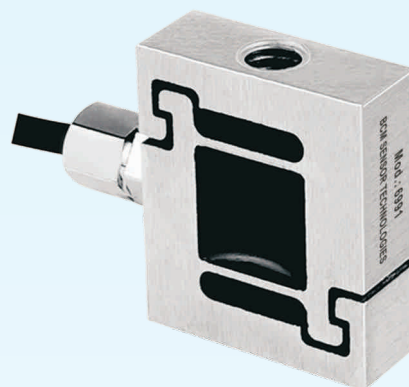
Its feature of the overload protection prevents it from damage in force measurements in which overload is often happens.

Moreover, this transducer features compact design of low-profile which makes it easy to be integrated into existing systems.

The transducers are made from stainless steel and sealed with silicone rubber in order to meet IP65 protection rating, compatible with the most industrial environments.

Thanks to advanced strain gauge technology from BCM SENSOR, the 6991 force transducers can deliver stable measuring results of high precision up to 0.1%fs.

On request, this 6991 transducer can be integrated with a TEDS (transducer electronic data sheet) chip in a 6-pin plugin connector at the end of its cable, by which the 6991 transducer can be easily re-calibrated on site without need for conventional calibration facility.



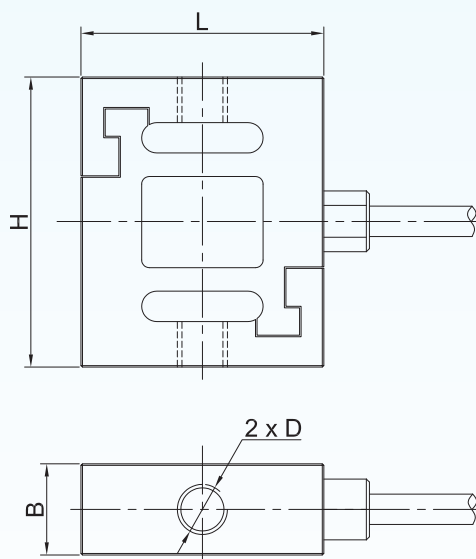
Features

- overload protection
- TEDS available on request
- accuracy up to 0.1%fs
- compact design

Applications

- tension or/and compression force measuring or monitoring
- material test in consumer electronics or electronic industry
- force test in medical-, robotical-, textile- & automotive-industries

Dimensions



Capacity (N)	L	H	B	D
3, ..., 30	16	19.1	5	M3x0.5
50, ..., 500	16	19.1	6	M4x0.7
700, ..., 2000	26	40	12	M8x1.25

Note: All dimensions are in mm.

BCM SENSOR TECHNOLOGIES BV

Industriepark Zone 4, Brechtsebaan 2
B-2900 Schoten - Antwerpen, BELGIUM

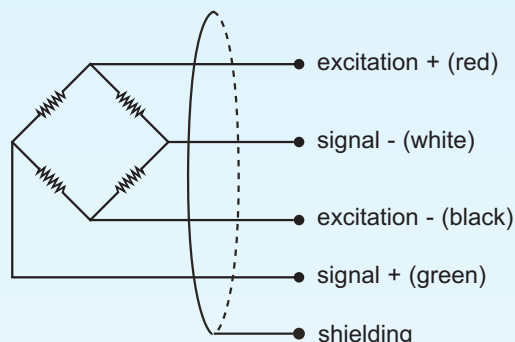
Tel.: +32-3-238 6469
Fax: +32-3-238 4171

website: www.bcmsensor.com
email: sales@bcmsensor.com

Model 6991

S-Type Force Transducers with Overload-Protection

Electrical Connection



Technical Data

Parameters	Units	Specifications	Notes
capacity	N	3, 5, 7, 10, 20, 30, 50, 70, 100, 200, 300, 500, 700, 1000, 2000	
safe load limit	%fs	150	1
ultimate overload	%fs	500	
output sensitivity at fs	mV/V	≥ 1.8	
zero unbalance	%fs	≤ ±2	
accuracy	%fs	±0.1	2
creep error (30min)	%fs	≤ ±0.05	
excitation (constant voltage source)	Vdc	3, ..., 10	
max. excitation voltage	Vdc	15	
input resistance	Ω	350±15	
output resistance	Ω	350±5	
insulation resistance	MΩ	≥ 5000 @100Vdc	
storage temp. range	°C	-35 ~ +80	
operating temp. range	°C	-20 ~ +80	
compensated temp. range	°C	-10 ~ +60	
temp. coefficient of sensitivity	%fso/°C	≤ ±0.005	3
temp. coefficient of zero	%fso/°C	≤ ±0.005	3
body material		17-4PH stainless steel	
sealing		potted with silicone rubber	
mechanical interface		refer to its dimensions	
electrical interface		Φ2mm, 4-core shielded PVC jacket, 0.5m cable length	
environment protection		IP65	
natural frequency	kHz	0.8, ..., 5 depending on measuring capacities	
unit weight (without cable)	g	~20, ..., ~40 depending on measuring capacities	

Notes: 1. "fs" refers to full scale pressure.

2. Accuracy = $\sqrt{\text{non-linearity}^2 + \text{hysteresis}^2 + \text{repeatability}^2}$.

3. Calculated as a rate of output change between -10°C and +60°C, and normalized by the output at room temperature (25°C).

BCM SENSOR TECHNOLOGIES BV

Model 6991

S-Type Force Transducers with Overload-Protection



Ordering Information

position (pos.) 1: model								
6991								
pos. 2: capacities								
3N		10N	50N	200N	700N			
5N		20N	70N	300N	1000N			
7N		30N	100N	500N	2000N			
pos. 3: output sensitivity								
1.8mV/V								
pos. 4: accuracy								
0.1%fs								
pos. 5: bridge resistance								
350Ω								
pos. 6: mechanical interface								
M3: for capacity 3N, ..., 30N								
M4: for capacity 50N, ..., 500N								
M8: for capacity 700N, ..., 2000N								
pos. 7: electrical interface								
2/4/PVC/0.5 = Φ2mm, 4-core shielded, PVC, cable length = 0.5m(#)								
(#): 0.5m is standard length, but users can define another length in the code, e.g., 2/4/PVC/1 refers to cable length of 1m.								
pos. 8: environment protection								
IP65								
pos. 9: customized specifications								
“(*) ” is necessary only if any customized specification is required, otherwise it is neglectable.								
pos.1	pos. 2	pos. 3	pos. 4	pos. 5	pos. 6	pos. 7	pos. 8	pos. 9

Examples of Ordering Code

- standard transducer:
 - 6991-100N-1.8mV/V-0.1%fs-350Ω-M4-2/4/PVC/0.5-IP65
 - 6991-3N-1.8mV/V-0.1%fs-350Ω-M3-2/4/PVC/1-IP65
- customized transducer:
 - 6991-3N-1.8mV/V-0.1%fs-350Ω-M2-2/4/PVC/1-IP65-(*)
 - (*): Customized mechanical interface = M2x0.4 thread.

The listed dimensions, specifications and ordering information are subject to change without prior notice.

BCM SENSOR TECHNOLOGIES BV

